





  
**BARRATT HOMES**
  
**PLYMOUTH RACE WEEK 2011**

**Amendment to Sailing Instructions**

**Amendment One**

**Delete 9.1 and replace with:**

9.1 Marks will be as follows:

Sailing Area	Normal Marks	Offset Mark (if used)	Alternative Windward & Offset Mark (if used)
1 	Orange Cones	Orange Sphere	Yellow Tetrahedron and Yellow Sphere
2 	Blue Cylinders	Blue Sphere	Red Cylinder and Red Sphere
3 	Yellow Tetrahedrons	Yellow Sphere	Orange Cone and Orange Sphere
MOCRA	Pantaenius Orange Buoys		

**Add 11.4**

11.4 A boat starting later than four minutes after her starting signal will be scored Did Not Start without a hearing. This changes rules A4 and A5.

**Add 13.3 & 13.4 (This changes rule 33)**

13.3 A radio message on the appropriate channel for the sailing area will detail any course change. This will be the only method of signaling course changes for IRC and MOCRA classes and is optional for all other classes. The failure to receive such transmissions shall not constitute grounds for redress.

13.4 The change will be signaled before the leading boat has begun the leg, although the new mark may not yet be in position. If possible, the approximate compass bearing to the new mark may be displayed on the Race Committee vessel signaling the change of course.

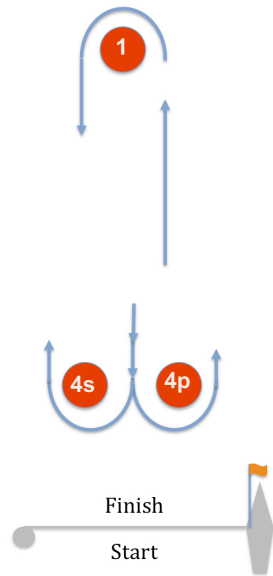
**Delete 14.1 and replace with:**

14.1 On sailing areas 1, 2 and 3 the finish line will be between the Committee Boat Mast displaying an Orange Flag and an Orange Danbuoy displaying a Blue Flag. The Orange Danbuoy will be on the Port side of the Committee Boat for all courses, except for the MOCRA class which will be on the Starboard side of the Committee Boat.

**Delete Addendum B – Courses and replace with: (over page)**

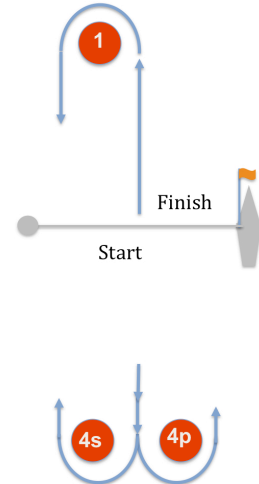
## Addendum B - Courses

**L**



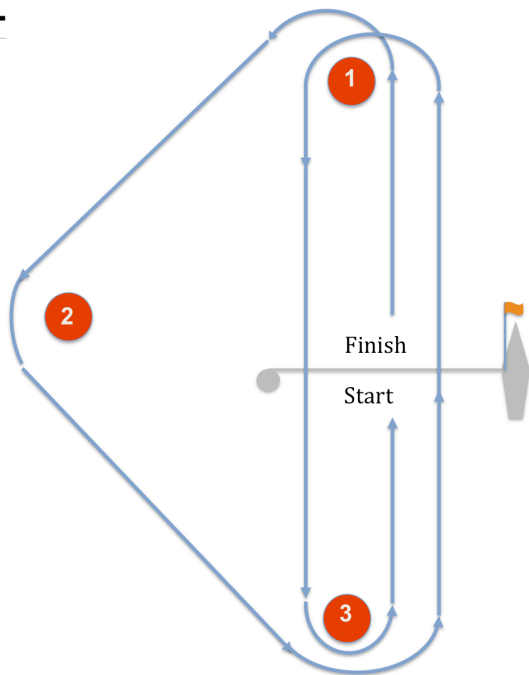
Signal	Mark Rounding Order
L2	Start - 1 - 4s/4p - 1 - Finish
L3	Start - 1 - 4s/4p - 1 - 4s/4p - 1 - Finish
L4	Start - 1 - 4s/4p - 1 - 4s/4p - 1 - 4s/4p - 1 - Finish

**W**



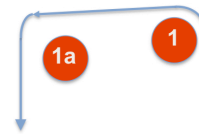
Signal	Mark Rounding Order
L2	Start - 1 - 4s/4p - 1 - 4s/4p - Finish
L3	Start - 1 - 4s/4p - 1 - 4s/4p - 1 - 4s/4p - Finish
L4	Start - 1 - 4s/4p - 1 - 4s/4p - 1 - 4s/4p - 1 - 4s/4p - Finish

**T**



Signal	Mark Rounding Order
T1	Start - 1 - 2 - 3 - 1 - 3 - Finish
T2	Start - 1 - 2 - 3 - 1 - 3 - 1 - 2 - 3 - 1 - 3 - Finish

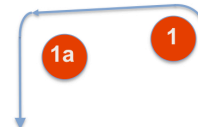
**LA**



Course: Same as Course L except with offset mark 1a

Signal	Mark Rounding Order
LA2	Start - 1 - 1a - 4s/4p - 1 - 1a - Finish
LA3	Start - 1 - 1a - 4s/4p - 1 - 1a - 4s/4p - 1 - 1a - Finish
LA4	Start - 1 - 1a - 4s/4p - 1 - 1a - 4s/4p - 1 - 1a - 4s/4p - 1 - 1a - Finish

**WA**



Course: Same as Course W except with offset mark 1a

Signal	Mark Rounding Order
WA2	Start - 1 - 1a - 4s/4p - 1 - 1a - 4s/4p - Finish
WA3	Start - 1 - 1a - 4s/4p - 1 - 1a - 4s/4p - 1 - 1a - 4s/4p - Finish
WA4	Start - 1 - 1a - 4s/4p - 1 - 1a - 4s/4p - 1 - 1a - 4s/4p - 1 - 1a - 4s/4p - Finish

## Delete Addendum C – Fixed Marks:

## Addendum C – Fixed Marks

Letter	Name	Description	Position (approximate)
A	Laid Mark	Pantaenius 1 (Orange) Buoy	To Windward of Start
B	Hands Deep	West Cardinal Buoy	50° 12.68' N 004° 21.10' W
C	Asia	Red Can Buoy	50° 21.47' N 004° 08.84' W
D	Fowey No 5	Yellow Can Buoy	50° 06.86' N 004° 30.66' W
E	Melampus	Red Can Buoy	50° 21.16' N 004° 08.73' W
F	Queens Ground	Red Can Buoy	50° 20.30' N 004° 10.08' W
G	New Ground	Red Can Buoy	50° 20.48' N 004° 09.44' W
H	Laid Mark	Pantaenius 2 (Orange) Buoy	50° 18.41' N 004° 12.17' W
I	Ash	Green Conical Buoy	50° 21.68' N 004° 08.86' W
J	F Buoy	Yellow Mooring Buoy	50° 20.73' N 004° 07.98' W
K	Dunstone Rock	Yellow Spherical Buoy	50° 21.17' N 004° 07.88' W
L	South Mallard	South Cardinal Buoy	50° 21.57' N 004° 08.30' W
M	Laid Mark	Pantaenius 3 (Orange) Buoy	50° 18.08' N 004° 06.90' W
N	Scylla	Red Can Buoy	50° 19.52' N 004° 14.88' W
O	NW Winter	West Cardinal Buoy	50° 21.54' N 004° 08.70' W
P	Gwineas	East Cardinal Buoy	50° 14.50' N 004° 45.37' W
Q	OSR South	Yellow Conical Buoy	50° 18.86' N 004° 10.11' W
R	Knap	Green Conical Buoy	50° 19.56' N 004° 10.01' W
S	East Tinker	East Cardinal Buoy	50° 19.20' N 004° 08.30' W
T	Draystone	Red Can Buoy	50° 18.85' N 004° 11.06' W
U	Laid Mark	Pantaenius 4 (Orange) Buoy	To Leeward of Finish
V	West Mallard	Green Conical Buoy	50° 21.57' N 004° 08.36' W
W	Cannis Rock	South Cardinal Buoy	50° 18.93' N 004° 39.94' W
X	NE Winter	Red Can Buoy	50° 21.54' N 004° 08.50' W
Y	Shag Rock	South Cardinal Buoy	50° 18.93' N 004° 33.85' W
Z	Ranneys	South Cardinal Buoy	50° 19.52' N 004° 14.88' W

All positions are WGS84 datum

Letters AB2DE means that the course is Start – A – B – A – B – D – E – Finish

Letter boards will be displayed on red or green backgrounds, Those on a red background should be left to Port. Those on a green background should be left to Starboard.

Issued at 1200 on 6<sup>th</sup> July 2011  
Race Committee




BARRATT HOMES  
PLYMOUTH RACE WEEK 2011

**Amendment to Sailing Instructions**

**Amendment Two**

Delete 7.2 and replace with:

7.2

Sailing Area	Location	VHF Channel
1 	Plymouth Sound	37
2 	South of the Breakwater	72
3 	South of the Breakwater	77

Issued at 1800 on 6<sup>th</sup> July 2011  
Race Committee